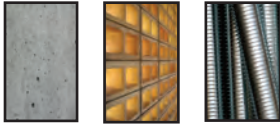


ROCKET RESIN POLYESTER STYRENE FREE



A two component chemical anchoring injection system. A formulation derived from polyester resin with high bond strength, developed principally to anchor threaded rods into concrete, and for masonry and hollow wall installations. Used widely for medium loads in both horizontal and vertical applications.

• CHARACTERISTICS

- Suitable for medium loads for non-critical applications.
- Fast working times for early loading in time sensitive applications.
- No styrene allows for use indoors and in enclosed spaces.
- Use in damp & wet environments and fixing holes.
- Extremely versatile in masonry, hollow, aerated concrete.
- 10:1 resin available in a variety of cartridge types.

• APPROVALS / CERTIFICATIONS / TESTING

- 15/0008 - ETA Option 7 Non-Cracked Concrete. Includes flooded holes.
- 19/0496 - ETA ETAG 029 Hollow Wall / Masonry Installations.
- CE Certified 1404-CPR-2586 - ZAG, Solvenia.
- LEED tested 2009 EQ c4.1 SCAQMD rule 1168 (2005.)
- VOC A+ Rating (Volatile Organic Content)
- WRAS Approved for use with Potable drinking water approval no. 2205534

• PHYSICAL PROPERTIES

- Mixed Colour - Grey
- Density - 1.71 kg/m²
- Compressive Strength - 43.5 N/mm² (EN ISO 604)

• TYPICAL TENSILE PERFORMANCE - STANDARD EMBEDMENT DEPTH

Concrete, C20/25, 5.8 Grade Studding						
Size	Recommended Load (kN)		Spacing (S _{cr,N}) (mm)	Drill Hole Ø (mm)	Fixing Hole Ø (mm)	Setting Depth (mm)
	Tension (N _{rec})	Shear (V _{rec})				
M8	8.36	5.14	160	10	9	80
M10	11.79	8.57	200	12	12	90
M12	17.29	12.00	240	14	14	110
M16	24.93	22.29	320	18	18	125
M20	38.14	34.86	400	22	22	170
M24	50.29	50.29	450	28	26	210
M30	68.07	81.43	520	35	32	280



ROCKET RESIN POLYESTER STYRENE FREE

• TYPICAL PERFORMANCE IN AERATED CONCRETE

Characteristic values of resistance under tension & shear loads for Autoclaved Aerated Concrete. Compressive strength of material $f_b > 6\text{MPa}$ Temp range -40 to $+40$ C degree. PESF.

Size	Condition :	d/d	w/w & w/d	d/d, w/w & w/d
	H _{ef} (mm)	Tension (kN)	Tension (kN)	Shear (kN)
M8	80	2	1.5	5
M10	90	3	2.5	8
M12	100	4	3.5	8
M16	100	5.5	4.5	8

*Note: The values are valid for steel 5.6 or greater. For steel 4.6 and 4.8 multiply VR_{k,b} by 0,8

• TYPICAL PERFORMANCE FOR SOLID & HOLLOW MASONRY

Category c: Solid Masonry, f_b class $\geq 18\text{MPa}$ – density $\rho_m \geq 1600\text{kg/m}^3$ - Temperature range $-40^\circ\text{C}/+40^\circ\text{C}$

Size	Installation Parameters						Characteristic Resistance		Service Loads	
	d Anchor Rod \varnothing d ₀ Drill Hole \varnothing (mm)	Min Edge C _{min} (mm)	Min Spacing S _{min} (mm)	Drill Depth h ₁ (mm)	Embedment Depth h _{ef} (mm)	Installation Torque Moment T _{inst}	Tension N _{rk} (kN)	Shear V _{rk} (kN)	Tension F (kN)	Shear F (kN)
M6	6 / 8	120	240	85	80	2	4	6	1.14	1.71
M8	8 / 10	120	240	85	80	2	4	6	1.14	1.71
M10	10 / 12	127.5	255	90	85	2	4	7	1.14	2
M12	12 / 14	127.5	255	90	85	2	4	7	1.14	2

Category c: Hollow Masonry, f_b class $\geq 6\text{MPa}$ – density $\rho_m \geq 900\text{kg/m}^3$ - Temperature range $-40^\circ\text{C}/+40^\circ\text{C}$

Size	Installation Parameters							Characteristic Resistance		Service Loads	
	d Anchor Rod \varnothing d ₀ Drill Hole \varnothing (mm)	Sleeve Type	Min Edge C _{min} (mm)	Min Spacing S _{min} (mm)	Drill Depth h ₁ (mm)	Embedment Depth h _{ef} (mm)	Installation Torque Moment T _{inst}	Tension N _{rk} (kN)	Shear V _{rk} (kN)	Tension F (kN)	Shear F (kN)
M6	6 / 12	12 x 80	100	120	85	80	2	2	2	0.57	0.57
M8	8 / 12	12 x 80	100	120	85	80	2	2	2	0.57	0.57
M10	10 / 16	16 x 85	100	120	90	85	2	2	2	0.57	0.57
M12	12 / 16	16 x 85	100	120	90	85	2	2	2	0.57	1.86



• WORKING AND HARDENING TIMES

Base Material Temperature	-10°C**	-5°C**	5°C	15°C	25°C	35°C
Gel Working Time	50 min	40 min	20 min	9 min	5 min	3 min
Curing Time Dry Concrete	240 min	180 min	90 min	60 min	30 min	20 min
Curing Time Wet Concrete	x 2	x 2	x 2	x 2	x 2	x 2

**Resin Temperature must be at least 20°C

ROCKET RESIN POLYESTER STYRENE FREE

• APPROVALS

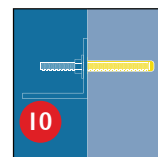
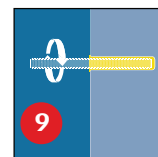
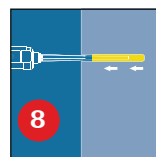
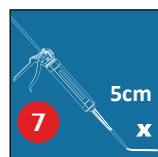
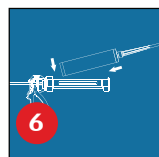
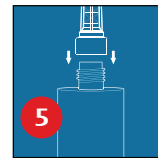
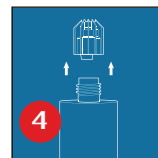
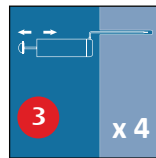
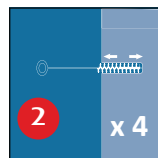
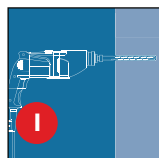
CE 1404	
Chemfix Products Ltd	
2019	
	
DoP: www.chemfix.co.uk/dop/pestf	
Chemfix PESF	
ETA-19/0496	
EAD 330076-00-0604	
Use category c.w/d - size M6-M12	
1404-CPR-2586	

CE 1404	
Chemfix Products Ltd	
2017	
	
DoP: www.chemfix.co.uk/dop/pestf	
Chemfix PESF TOP	
ETA-15/0008	
EAD 330499-01-0601	
M8 - M16 Uncracked Concrete	
1404-CPR-2585	

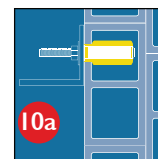
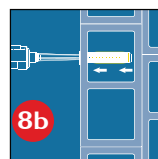
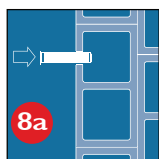


• INSTALLATION

Solid substrates



Hollow wall



For further information please refer to the Technical Data Sheet in the website customer area, or by request.

• STORAGE / SHELF

This product should be stored between +5°C & +25°C.

Avoid Direct Sunlight

The Shelf life of the product is 18 months from the manufacture date.